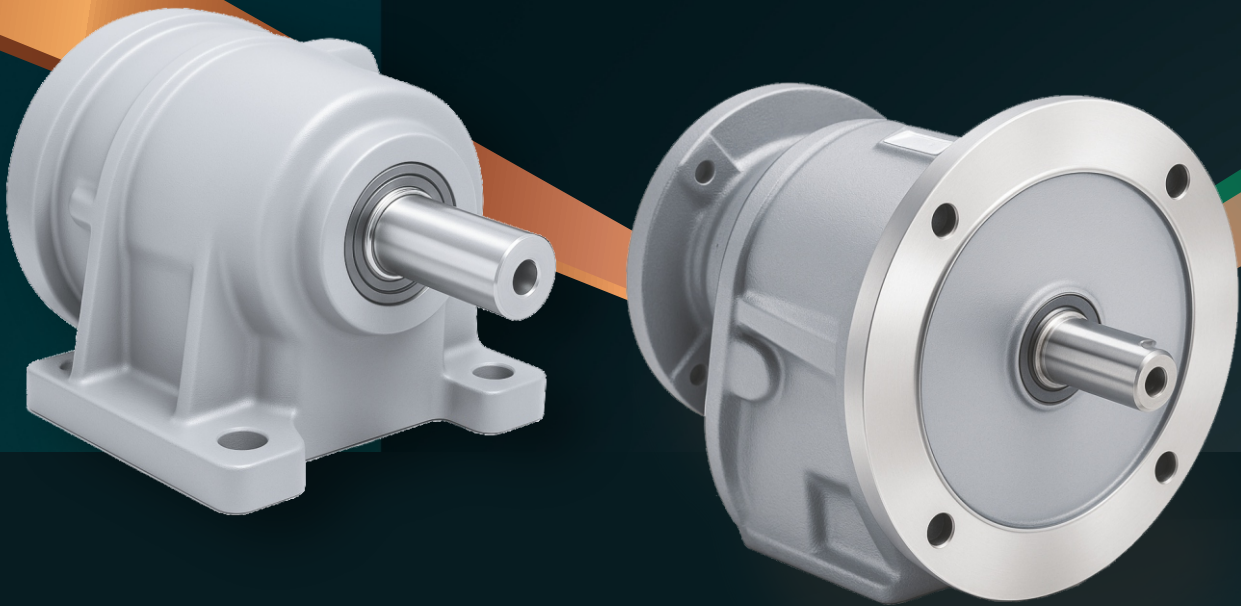


INTRODUCING

GEARBOX SOLUTIONS FOR INDUSTRIAL APPLICATIONS



INLINE HELICAL GEARBOXES

SHAFT DIAMETER – 20 TO 90 mm

INPUT POWER RANGE - 0.18 kW TO 45 kW

RATIO RANGE – 3 TO 175

TORQUE RANGE – 2280 TO 41500 Nm

AVAILABLE VERSIONS – FOOT AND FLANGE



FAST DELIVERY

All sizes available with large-scale production capacity



LONG LIFE

Reliable Operation Over Long Service Period



HARDENED GEARS

20MnCr5 / SAE8620 case-hardened for strength & quiet performance



LEAK-PROOF DESIGN

Premium seals eliminate oil leakage



QUIET & EFFICIENT

<75 dB noise, high efficiency - even in multi-stage setups



SYNTHETIC LUBRICATION

Ensures smooth, low-maintenance operation



HEAVY-DUTY LOAD CAPACITY

Built to handle high axial & radial loads



ROBUST HOUSING

FG260 cast iron body resists shock loads

TECHNICAL SPECIFICATIONS

Output Shaft Size	Gearbox Mounting	Ratio of Gearbox	Reduction	Motor Mounting	Input Motor Frame	MOC of Gearbox
20	Foot, Flange	4.1 - 36.1	Single / Double	B3 / B5 / B14	71, 80	CI
25	Foot, Flange	2.9 - 34.2	Single / Double	B3 / B5 / B14	80, 90	CI
30	Foot, Flange	3.6 - 26.3	Single / Double	B3 / B5 / B14	80, 90	CI
35	Foot, Flange	3.6 - 26.3	Single / Double	B3 / B5 / B14	90, 100	CI
45	Foot, Flange	3.8 - 71.3	Single / Double	B3 / B5 / B14	90, 100, 112, 132	CI
55	Foot, Flange	3.9 - 164.0	Single / Double	B3 / B5 / B14	90, 100, 112, 132, 160	CI
60	Foot, Flange	3.8 - 174.8	Single / Double	B3 / B5 / B14	100, 112, 132, 160, 180	CI
80	Foot, Flange	3.4 - 107.5	Single / Double	B3 / B5 / B14	132, 160, 180, 200	CI
90	Foot, Flange	4.6 - 118.5	Single / Double	B3 / B5 / B14	132, 160, 180, 200, 225	CI

A P P L I C A T I O N S



PHARMA
INDUSTRY



PAPER
INDUSTRY



RUBBER & PLASTIC
INDUSTRY



DAIRY
INDUSTRY



TEXTILE
INDUSTRY



CHEMICAL
INDUSTRY



CONSTRUCTION
INDUSTRY



FOOD
INDUSTRY

For more information, please contact us at “head.motors@kirloskar.com”

kirloskar
Oil Engines

www.kirloskaroilengines.com

KIRLOS KAR OIL ENGINES LIMITED

A Kirloskar Group Company

Laxmanrao Kirloskar Road, Khadki,
Pune 411 003 INDIA.



Stamp of Authorised
Representative